

CASP8

Catalog Number: 26352

Gene Symbol: CASP8; ALPS2B; CAP4; MACH; FLICE

Description: Anti-CASP8 Mouse Monoclonal Antibody

Background: The CASP8 gene encodes a member of the cysteine-aspartic acid protease (caspase) family. Sequential activation of caspases plays a central role in the execution-phase of cell apoptosis. A very rare genetic disorder of the immune system can also be caused by mutations in this gene.

Immunogen: Purified CASP8 protein, human origin.

Tested applications: ELISA, WB, IHC

Recommended dilutions:

ELISA: 1:1000-1:2000

WB: 1:500-1:1000

IHC: 1:50-1:100

Concentration: 1 mg/ml

Host: Mouse

Clonality: Monoclonal

Purity: Purified from ascites

Format: Liquid

Storage buffer:

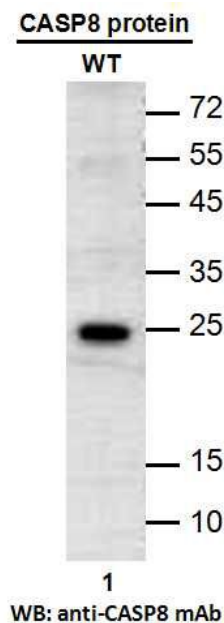
Preservative: no

Constituents: PBS (without Mg^{2+} and Ca^{2+}), pH 7.4, 150 mM NaCl, 50% glycerol

Species Reactivity: Recognizes CASP8 of vertebrates.

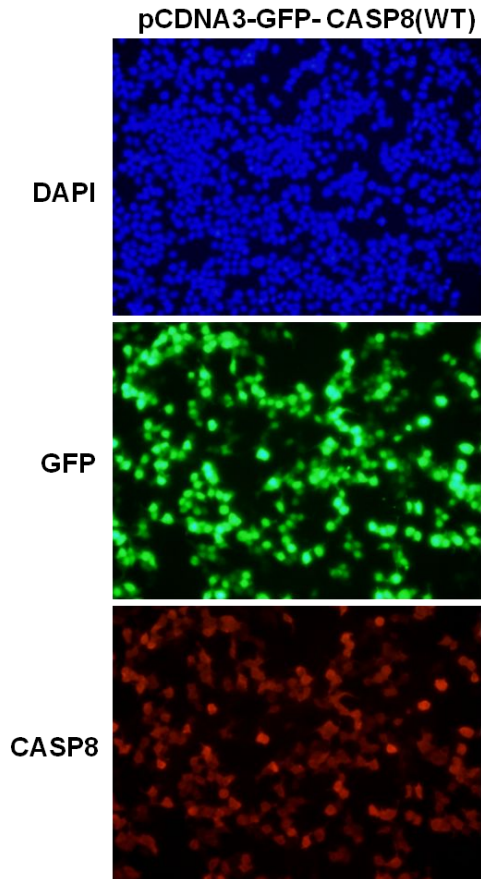
Storage Conditions: Store at $-20^{\circ}C$. Avoid freeze / thaw cycles.

Western blot:



Western blot analysis of recombinant CASP8 proteins. Purified His-tagged CASP8 protein (268-435aa, 25KD) was blotted with anti-CASP8 monoclonal antibody (Cat. #26352).

Immunofluorescence:



Immunofluorescence of cells expressing CASP8 proteins with anti-CASP8 antibody.

HEK293T cells were transfected with pCDNA3-GFP-CASP8 (WT) plasmid, then fixed and stained with anti-CASP8 monoclonal antibody (Cat. #26352).